

SunMaxx- The Best of Both Worlds

There are distinct advantages and disadvantage to both Flat Plate Solar Collectors and Evacuated Tube Solar Collectors. Because these two different types solar collectors are designed to provide optimum performance in different climates and locations, SunMaxx offers both types of solar collectors in order to best serve a wider base of customers in a wider range of locations and solar hot water applications. **No matter what your choice, SunMaxx can supply you with some of the very best collectors in the industry!**

Glazed Flat Plate Collectors

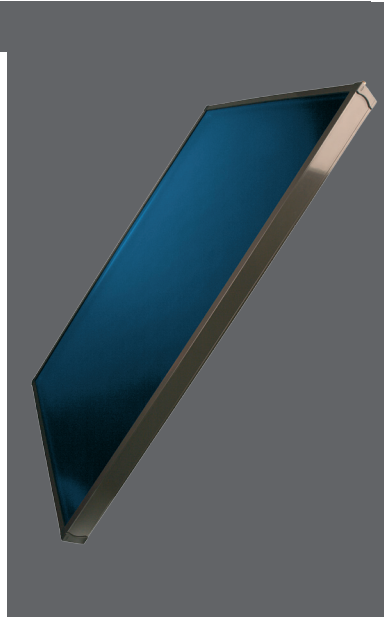
Flat Plates absorb solar energy much the way a PV solar electric panel does in that they have a flat solar absorption area. This design provides affordable pricing and high performance under optimum conditions, but also limits performance in northern climates and locations where freezing temperatures are an issue for much of the year and low solar angles and short days are prevalent during the fall and winter months.

Key Advantages

- Affordably priced - typically significantly less expensive than evacuated tube solar collectors
- High efficiency and performance in southern, sunny, warm climates all year round
- Highest overall BTU production per dollar of any type of Solar Collector for hot water production
- Some flat plate collectors are designed to be very aesthetically pleasing (such as the SunMaxx-M2)

Key Disadvantages

- Poor performance in high temperature applications due to high heat loss
- Poor performance in cold conditions due to high heat loss
- When collector is damaged, or not functioning, the entire system must be shut down and the entire collector replaced.



Evacuated Tube Collectors

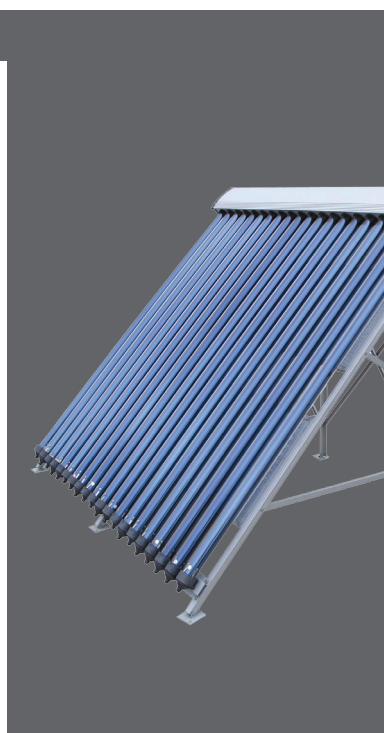
Evacuated tube solar collectors are a series of vacuum sealed glass tubes that are inserted into a manifold. They typically cost more in \$/BTU in the standard SRCC Clear C comparison (though this is certainly not always the case with SunMaxx!). This comparison is accurate for warmer climates but for several reasons, evacuated tubes are the optimal choice for any colder climate or applications that generate high temperatures.

Key Advantages

- Unique tubular design passively tracks the sun, allowing the solar rays to constantly be perpendicular to the absorber surface. This guarantees the best absorption regardless of architectural placement and solar angle.
- Use of a complete vacuum as an insulator guarantees the best heat loss and freeze protection possible. This makes them the more efficient choice for any application in a cold climate or where extremely high temperatures are generated or required.
- Systems continues to operate if a tube fails, or is broken. You need only replace damaged tubes, which is very inexpensive, rather than the entire collector. These tubes can be replaced while the system is still active

Key Disadvantages

- Slightly more conspicuous than Flat Plate Solar Collectors
- Typically more expensive than Flat Plate Solar Collectors



In order to maintain the highest standards of service and knowledge of the latest solar technologies, Silicon Solar is a proud member of:



2917 State Hwy 7, Bainbridge, NY 13733
P: 888.SOLAR11 (Integrated Products)
P: 877.SUNMAXX (Solar Thermal)
www.siliconsolar.com | www.sunmaxxsolar.com

© 2008 Silicon Solar Inc - All Rights Reserved | shw-pcs-005 | last revised: 11/2008

The SunMaxx Advantage

We show you the numbers they're afraid to!

Don't make a bad investment again!

Evacuated Tube Collectors

Company	Model Number	Gross Area (ft ²)	Clear C (BTUs/Day)	MSRP (US\$)*	MSRP Price/BTU*
Viessman	Vistol 300T	46.1	39	3833	\$98.28
ThermoMaxx	Mazdon TMA-600-20	32.9	26	2200	\$84.62
Apricus	AP-20	29.2	23	1258	\$54.70
Sunda	SEIDO 5-8 AS/AB	21.8	18	917	\$50.94
SunMaxx	SunMaxx-20 EVT	37.0	28	1093	\$39.04

Glazed Flat Plate Collectors

Company	Model Number	Gross Area (ft ²)	Clear C (BTUs/Day)	MSRP (US\$)*	MSRP Price/BTU*
AET	Morning Star MSC-26	25.3	25	1188	\$47.52
AET	Alternate Energy AE-21	20.8	21	990	\$46.50
Schuco	Premium V,H,LA	29.0	31	1232	\$39.74
Heliodyne	Gobi 406 001	26.9	28	997	\$35.61
SunMaxx	SunMaxx-M2	23.4	23	801	\$34.83
SunMaxx	SunMaxx-M25	27.7	28	835	\$29.82

**Note - Prices were obtained from these companies and their dealers. They change frequently, and cannot be guaranteed to be 100% accurate.*

In order to maintain the highest standards of service and knowledge of the latest solar technologies, Silicon Solar is a proud member of:

2917 State Hwy 7, Bainbridge, NY 13733

P: 888.SOLAR11 (Integrated Products)

P: 877.SUNMAXX (Solar Thermal)

www.siliconsolar.com | www.sunmaxxsolar.com

© 2008 Silicon Solar Inc - All Rights Reserved | shw-pcs-005 | last revised: 11/2008

